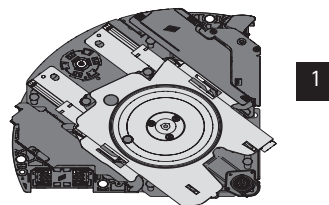
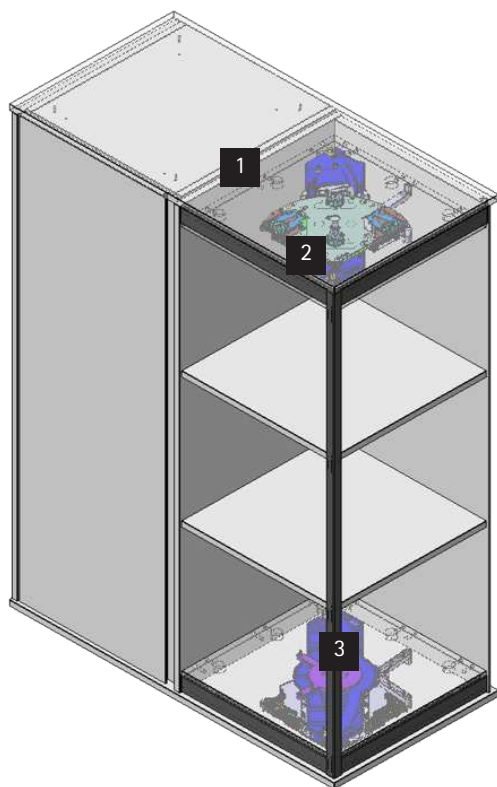


FurnSpin

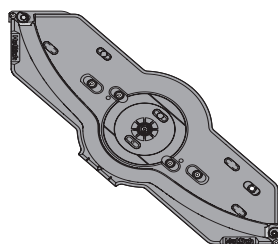
Catalogue



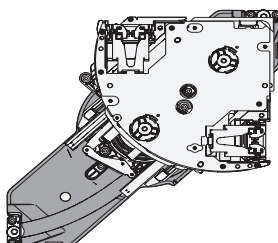
System overview



1



2



3

Basic components

1 Top fitting (top panel, fixed furniture)

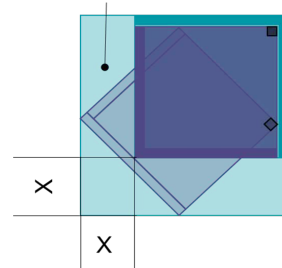
2 Top fitting (spinning furniture)

3 Bottom fitting (spinning furniture)

Movement range

X	Smallest spin furniture	Largest spin furniture
S	175mm	191mm
M	202mm	219mm
XL	259mm	281mm

X = movement range



	Small (S)	Medium (M)	Extra-large (XL)
Page	4	<i>Coming soon</i>	4
	Mechanism		
Load capacity	80kg	100kg	120kg
Mechanism size	339mm wide 339mm deep 40mm high	402mm wide 402mm deep 40mm high	526mm wide 526mm deep 45mm high
Opening & closing	Left & right spin available Integrated Silent system for soft-closing Integrated Push to open for handle-less design (optional use)		
Adjustments	<ul style="list-style-type: none"> ► height ► sideways tilt ► diagonal tilt ► flush 		
	Cabinet		
Spinning cabinet width	377mm – 450mm square	440mm – 515mm square	564mm – 664mm square
Spinning cabinet panels	Top, front & side panel: min 16mm		
	Requires a bottom panel thickness of min 18mm (19mm chipboard)	Requires a bottom panel thickness of min 20mm (21mm chipboard)	Requires a bottom panel thickness of min 21mm (25mm chipboard)
	Panel thickness impacts the placement of the unit. Not all panel thicknesses are suitable for every measurement. Ensure technical checks are completed accurately before finalising moving furniture panel thickness.		
Maximum front & side panel weight <i>Limit per individual panel, not combined</i>	15kg	18kg	20kg
Recommended maximum height	2000mm	2200mm	2400mm

FurnSpin

► Push to Open Set



- Features Silent system for soft closing & opening
- Integrated Push top open for handle-less design
- Push to open feature only operational with the installation of the activator – installing without the activator results in functionality equivalent to FurnSpin with Silent System only

Sets comprise:

- Top fitting pieces for both spinning and fixed furniture
- Bottom fitting piece for spinning furniture
- Push top open activator
- Screws for fixing
- Adjustment tool

Size S, load capacity up to 80kg

Size S Cabinet specifications:

- Movement range 175mm - 191mm
- For cabinet width 377mm - 450mm
- For cabinet height up to 2000mm

	Order no.		PU
	Right spin opening	Left spin opening	
Top placement Push to open	9 349 284	9 349 283	1 set
Bottom placement Push to open	9 349 286	9 349 285	1 set

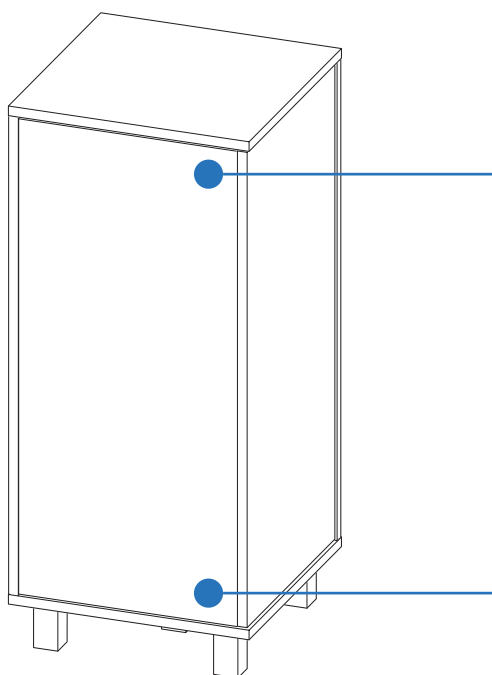
Size XL, load capacity up to 120kg

Size XL Cabinet specifications:

- Movement range 275mm - 296mm
- For cabinet width 564mm - 664mm
- For cabinet height up to 2400mm

	Order no.		PU
	Right spin opening	Left spin opening	
Top placement Push to open	9 349 306	9 349 305	1 set
Bottom placement Push to open	9 349 308	9 349 307	1 set

Push to open placement guide



Top placement

- Push to open is engaged at the top FurnSpin mechanism
- Best suited when the top of the spinning furniture is positioned below eye level, such as under bench or kitchen island placements
- Use in all applications where the intuitive place to press for Push to open is closer to the top mechanism

Bottom placement

- Push to open is engaged at the bottom FurnSpin mechanism
- Best suited when the top of the spinning furniture is positioned above eye level, such as on bench placements or high wall-mounted units
- Use in all applications where the intuitive place to press for Push to open is closer to the bottom mechanism

The Push to open function performs optimally when the press force is nearest the mechanism, and when the panel gap allowance equates to the recommended measurement.



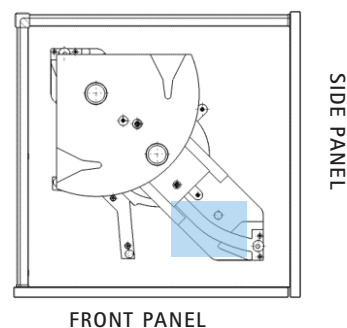
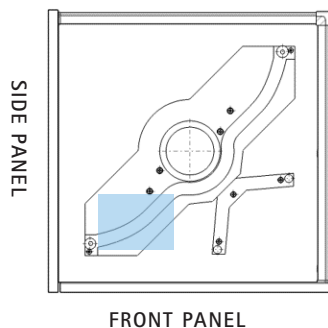
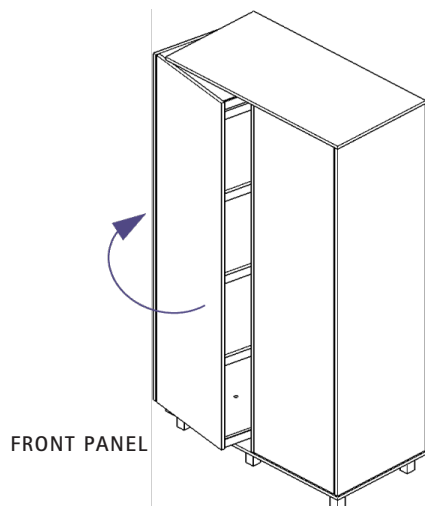
Scan here for the
installation video guide



Scan here for the
adjustment video

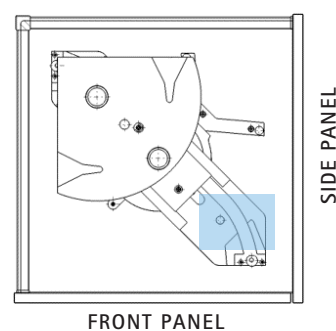
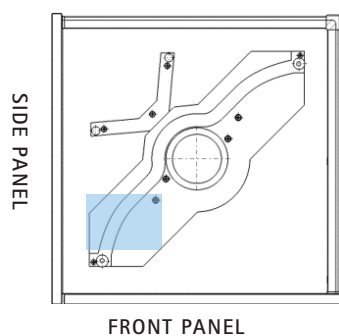
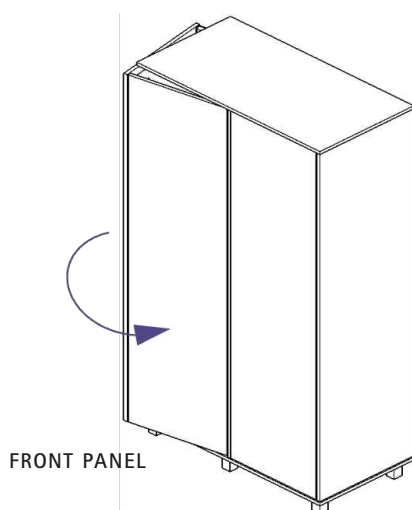
Right spin furniture

Opening clockwise (standard spin)



- Cone shaped part of the bottom fitting always in the direction of the opened side of the spinning furniture
- Steering curve is near the front panel

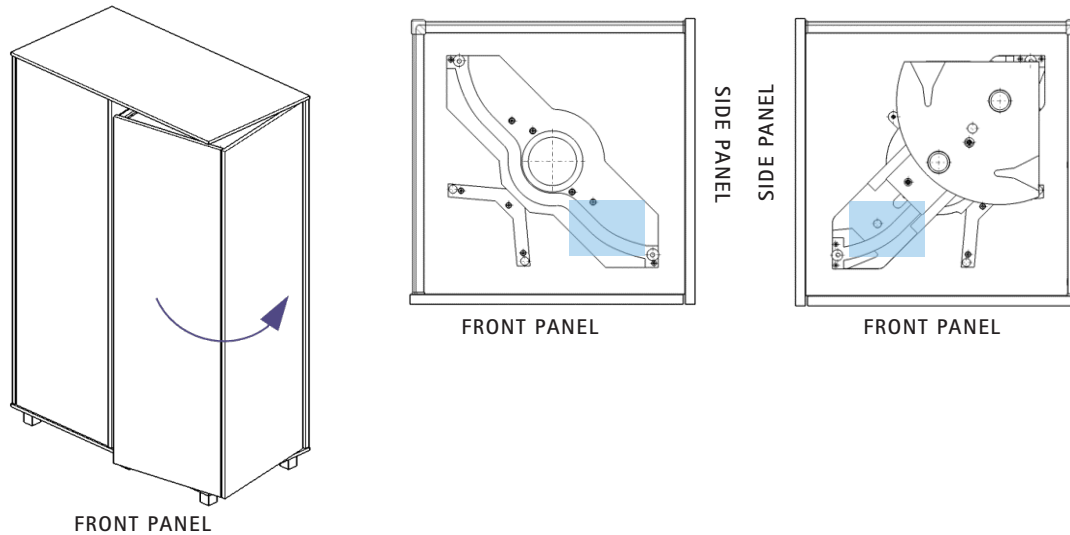
Opening counter-clockwise (reversed spin)



- Cone shaped part of the bottom fitting always in the direction of the opened side of the spinning furniture
- Steering curve is near the side panel

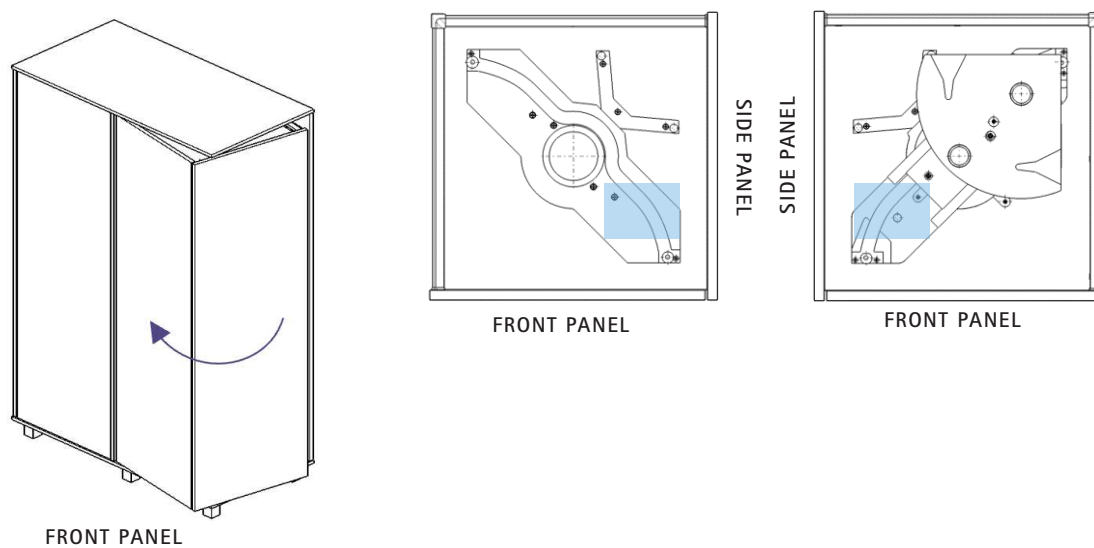
Left spin furniture

Opening clockwise (standard spin)



- Cone shaped part of the bottom fitting always in the direction of the opened side of the spinning furniture
- Steering curve is near the front panel

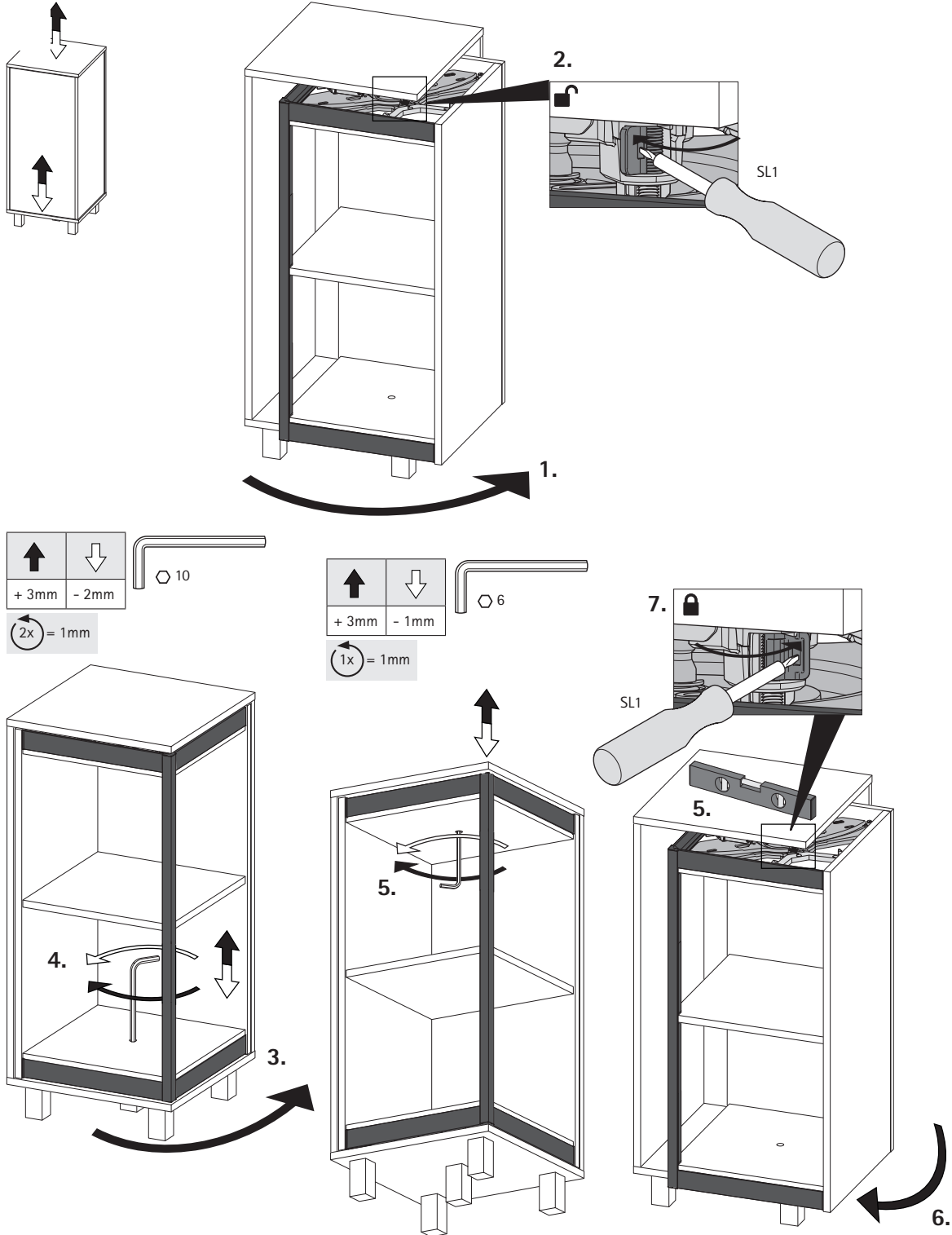
Opening counter-clockwise (reversed spin)



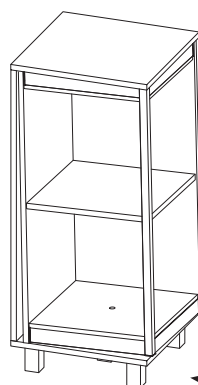
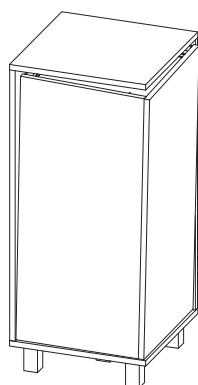
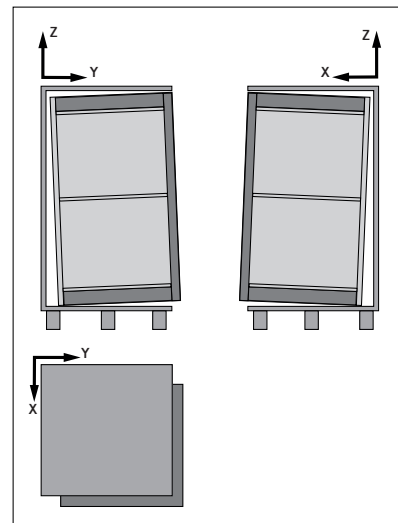
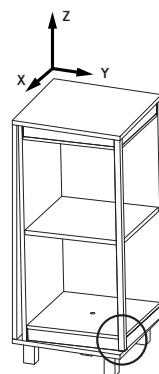
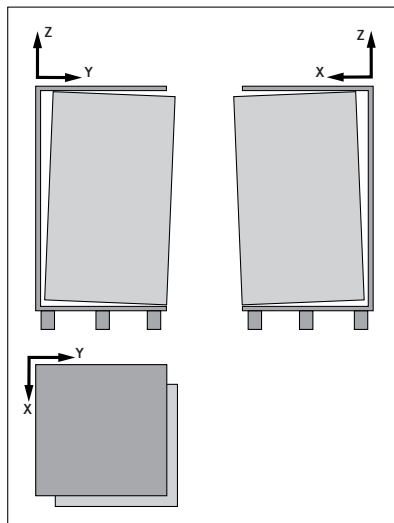
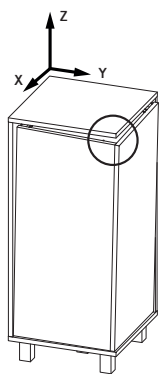
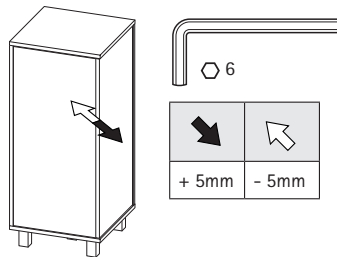
- Cone shaped part of the bottom fitting always in the direction of the opened side of the spinning furniture
- Steering curve is near the side panel

Adjustments are required to be made in the order shown below

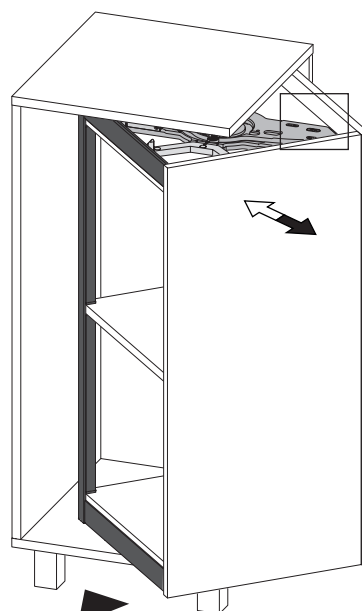
Height adjustment



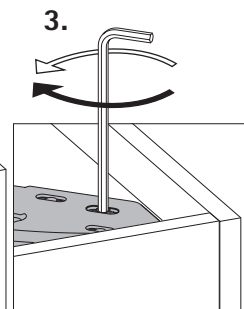
Diagonal adjustment



1.

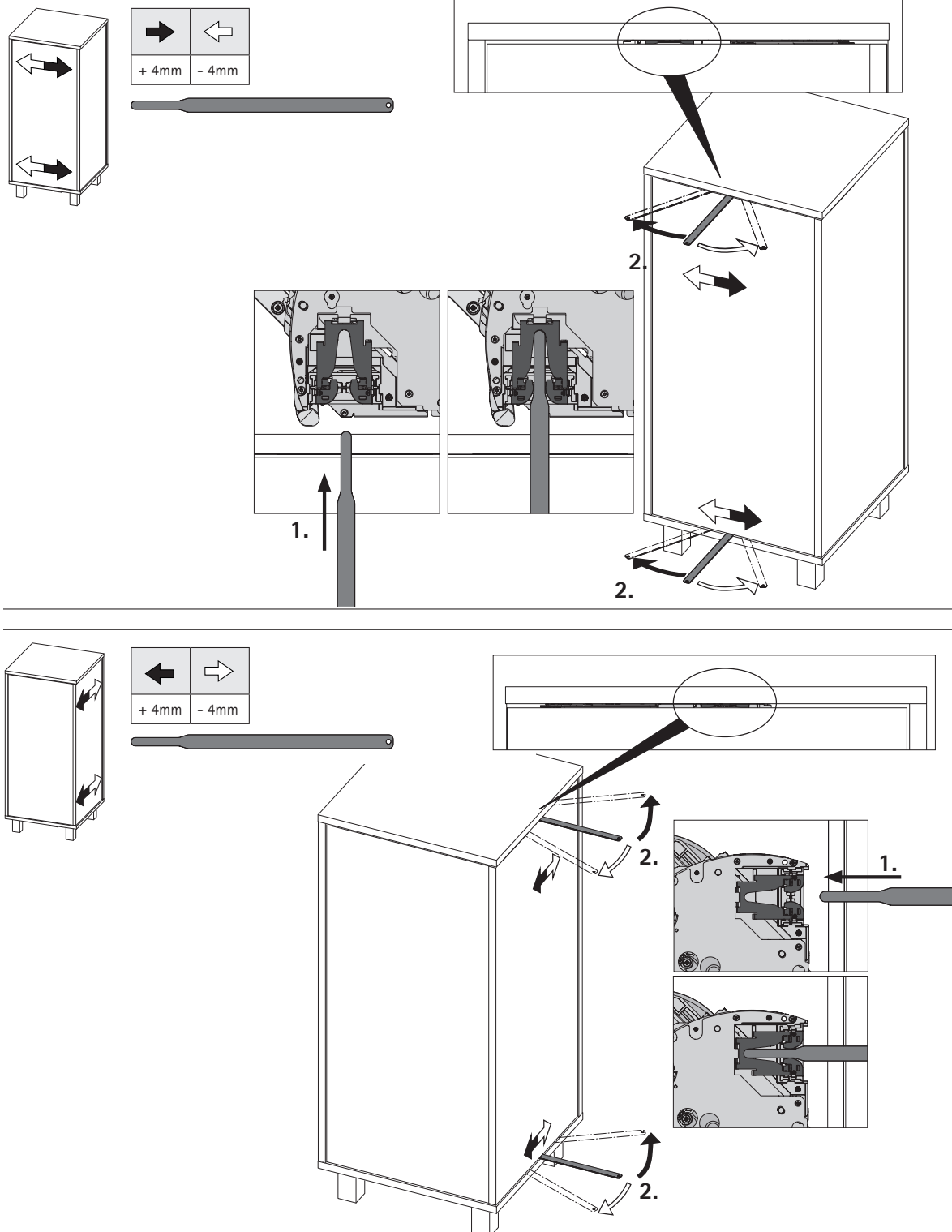


2.

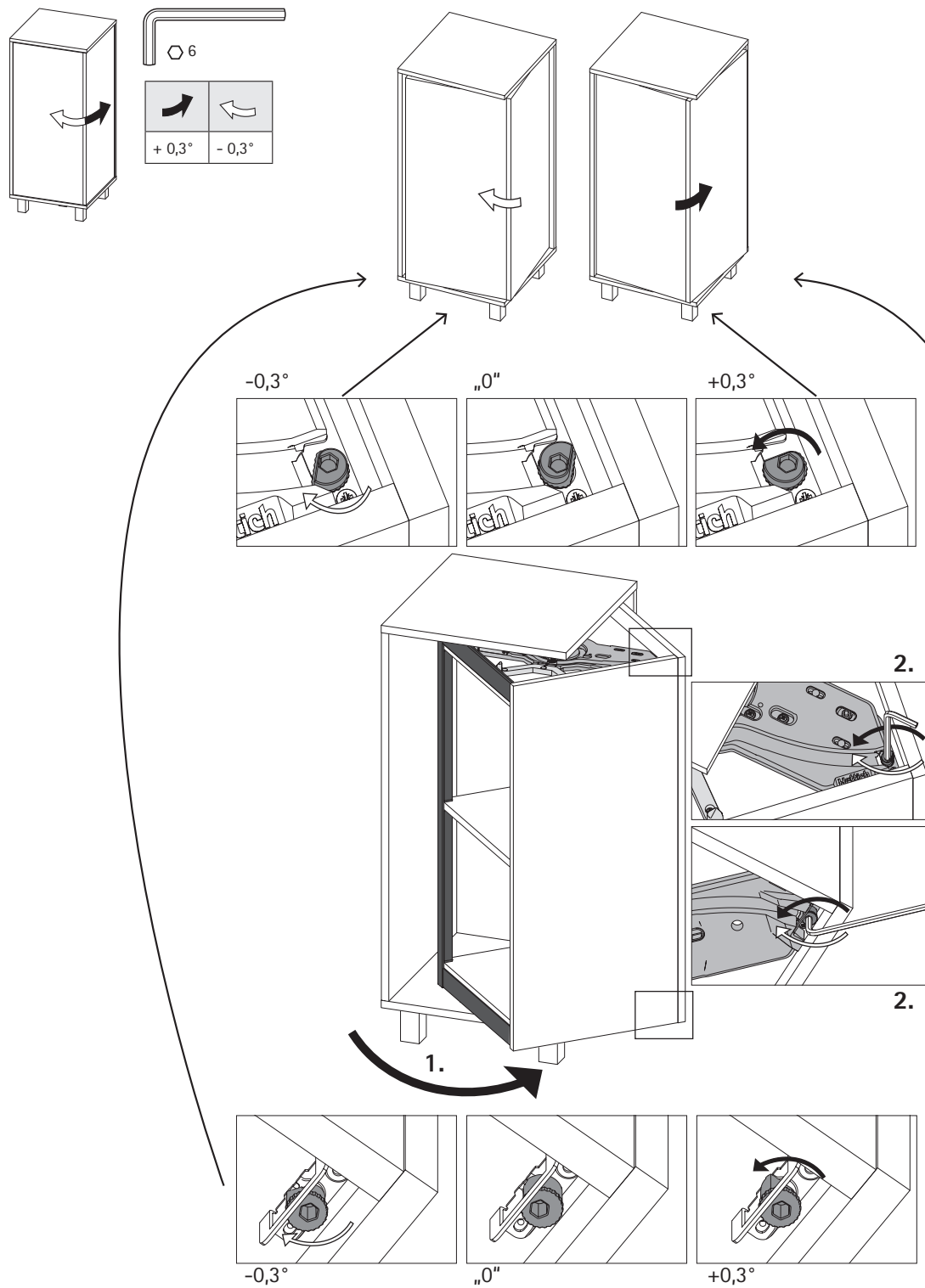


3.

Sideways tilt adjustment

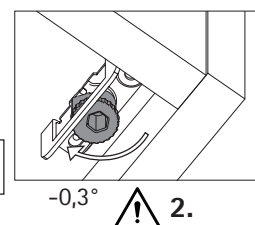
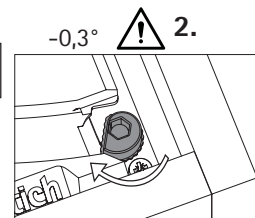
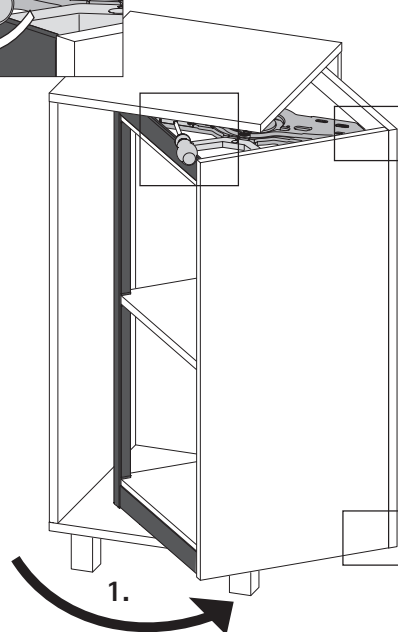
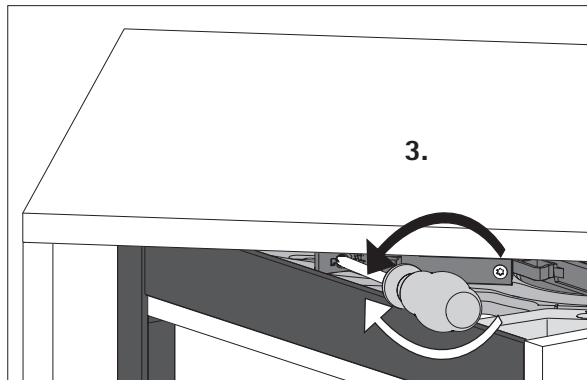
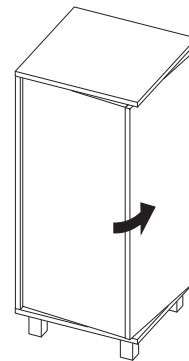
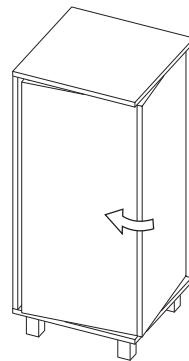
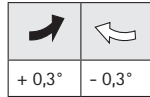
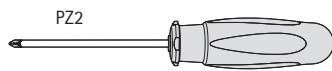
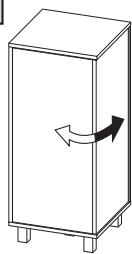


Flush adjustment



PTO adjustment

PTO



General technical conditions

The fitting information, screw fixing points and load capacity information contained in this document assume proper attachment using screws specified by Hettich to a chipboard panel providing a screw pull out resistance of at least 1,000 N in accordance with EN 320.

Hettich accepts no responsibility for the load capacity of furniture and its components if materials or fastening methods are used other than those stated; the furniture manufacturer must verify load capacity.

The fitting situations show in this catalogue are only intended to illustrate the possible options. The furniture manufacturer is responsible for ensuring that furniture is designed in compliance with standards, in particular with regard to meeting the requirements on safety.

We will be pleased to provide any further information you may require.

General Terms of Sale and Delivery

All products and services will be provided exclusively on the basis of our General Terms of Sale and Delivery published on our website at www.hettich-agb.com.

Legal notice

© Hettich Marketing- und Vertriebs GmbH & Co. KG
32602 Vlotho, Germany



Safety information

All installation work must only be carried out by certified furniture fitters.

At least 2 people are required to carry out installation.

Risk of injury and damage to property from unsecured furniture tipping over.

On opening unsecured furniture, they can tip over and cause serious injuries and considerable damage to property.

- When fitting furniture, secure them to the wall or floor with suitable fasteners to prevent them from tipping over.
- Follow the instructions of the furniture manufacturer.

April 2025

We reserve all rights to this catalogue under copyright law. It shall not be permissible to duplicate this catalogue in any form either in whole or in part without our written consent. Subject to technical alterations. Errors and omissions excepted. Subject to colour variations.

www.hettich.com

Hettich New Zealand

18 Barmac Place
East Tamaki, Auckland

Free Phone: 0800 438 842

sales-nz@hettich.com

shop.hettich.com

designwithhettich.co.nz

DOI May 2025